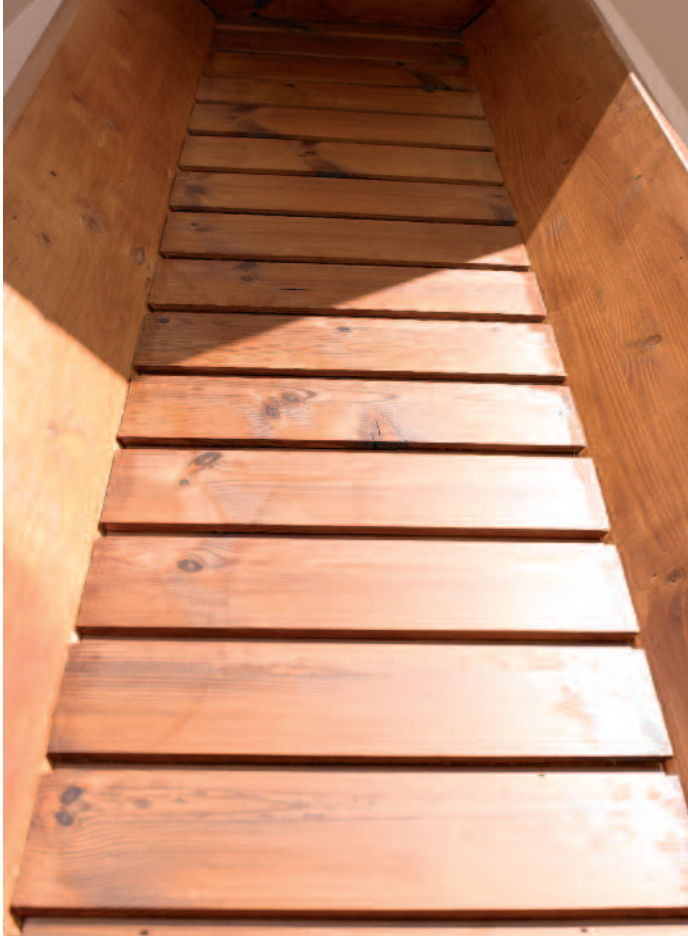
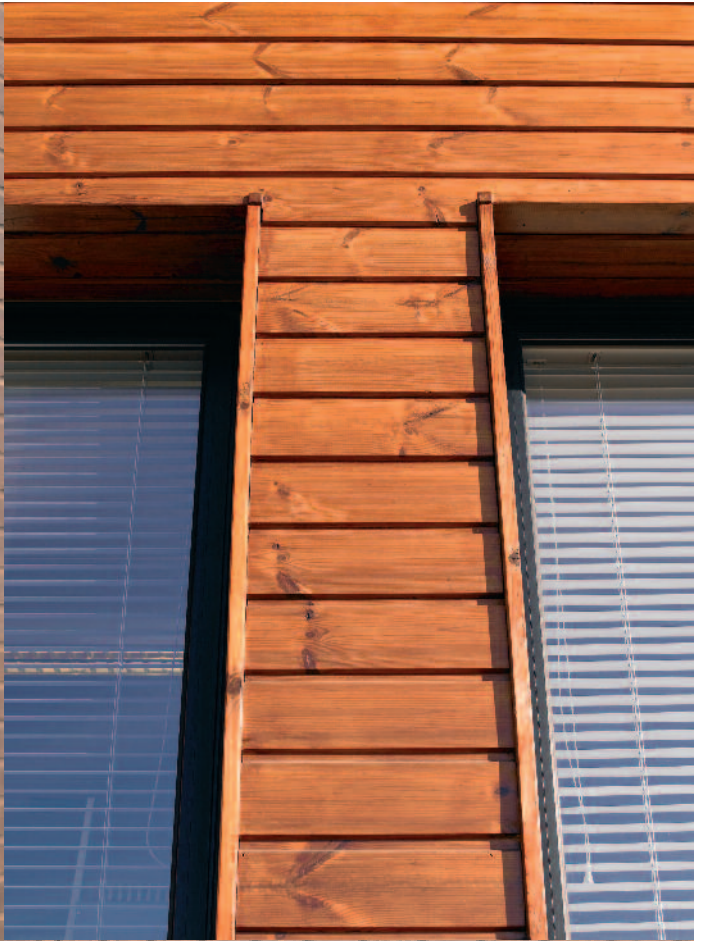


# ThermoWood<sup>®</sup>

Technical manual



# ThermoWood® tough and long-lasting

Finnforest ThermoWood® is produced by heat treating Finnish grown European Redwood (Red Pine) to temperatures in excess of 200 degrees Centigrade. During heat treatment, chemical and structural changes occur within the timber which alter and improve some of its basic characteristics.

The resulting product is an altogether more durable and stable timber, an ideal material for use in exposed areas such as external wall claddings.

<b>Introduction to ThermoWood®</b>	<b>04</b>	<b>Installation</b>	<b>15</b>
Background	04	Fixings	15
The ThermoWood® Process	05	Nailing Positions	16
<b>Key Properties of Finnforest ThermoWood®</b>	<b>06</b>	<b>Surface Treatment</b>	<b>16</b>
		Maintenance	17
<b>Products</b>	<b>08</b>	<b>General Working with ThermoWood® Products</b>	<b>18</b>
Visual Quality	08		
Types of Cladding	08		
Product Profiles	09	<b>Health &amp; Safety</b>	<b>18</b>
		Handling & Storage	18
		Waste Handling	18
<b>General Design</b>	<b>10</b>		
Battens	10	<b>Appendix 1</b>	
Maintaining a Drained and Ventilated Cavity	12	<b>Hazard Classification</b>	<b>19</b>
Openings	12		
Corner Details	12		
Upper Edge and Lower Edge Details	14		

# Introducing ThermoWood®



## Background

Heat treatment of wood was scientifically studied by Stamm and Hansen in the 1930s in Germany and by White in the 1940s in the United States. In the 1950s, Germans Bavendam, Runkel and Buro continued research into the subject. Kollman and Schneider published their findings in the 1960s, and Rusche and Burmester in the 1970s. More recently, research work was carried out in Finland, France and the Netherlands in the 1990s. The most comprehensive research work was conducted by VTT (Finnish State Research Center) in Finland.

ThermoWood® is manufactured using a method developed by VTT. The wood material is heated to a temperature of at least 180 degrees Celsius while it is protected with steam. Besides providing protection, the steam also affects the chemical changes taking place in the wood. As a result of the treatment, environmentally friendly ThermoWood® is created. Its colour darkens, it is more stable than normal wood in conditions of changing humidity and its thermal insulation properties are improved. If carried out at a sufficiently high temperature, treatment also makes the wood resistant to decay.

# The ThermoWood® process

An industrial scale heat-treatment process for wood has been developed at VTT in co-operation with the Finnish wood product industry. The ThermoWood® process is licensed to the members of the Finnish ThermoWood® Association. Finnforest ThermoWood® is available in two treatment classes Thermo-S (Scandinavian Pine or Spruce, heat treatment 190°C, internal use) and Thermo-D (Scandinavian Pine, heat treatment 212°C, internal and external use).

**The ThermoWood® process can be divided into three main phases:**

## Phase 1.

### Temperature increase and high-temperature drying

Using heat and steam, the kiln temperature is raised rapidly to a level of around 100°C. Thereafter, the temperature is increased steadily to 130°C, during which time the high-temperature drying takes place and the moisture content in the wood decreases to nearly zero.

## Phase 2.

### Heat treatment

Once high-temperature drying has taken place, the temperature inside the kiln is increased to between 185°C and 215°C.

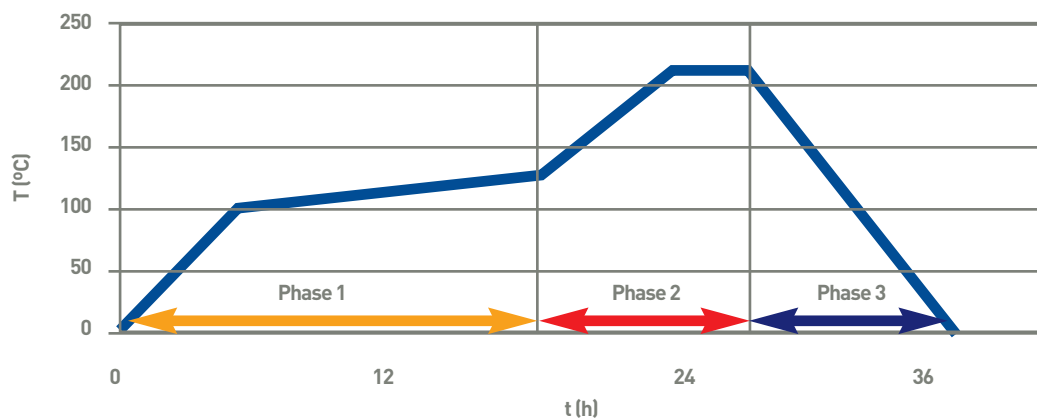
When the target level has been reached, the temperature remains constant for 2-3 hours depending on the end-use application.

## Phase 3.

### Cooling and moisture conditioning

The final stage is to lower the temperature by using water spray systems; when the temperature has reached 80-90°C, re-moisturising takes place to bring the wood moisture content to a useable level, 4-7%.

Figure 1. Diagram of the production process.



# Key properties ThermoWood®

## Stability

ThermoWood® has improved stability when compared to normal kiln dried Pine.

The internal stresses within the structure of timber are reduced when it is treated to the high temperatures of the ThermoWood® process. This reduces the potential for twist and warp. In addition there is a decrease in the equilibrium moisture content and water permeability. There exists a linear correlation between water intake properties and dimensional stability of the material under changing moisture conditions. Swelling and shrinkage of ThermoWood® is only 50% of the corresponding values of untreated Nordic Pine and is in a similar range to Teak.

Wood samples	MC %	MC %	Dimensional Change % per 1% MC change		Dimensional Change 50%RH→90%RH %	
	50%RH	90%RH	Thickness	Width	Thickness	Width
ThermoWood®	5 %	10 %	0.28	0.17	1.4%	0.85%
Pine Heartwood	10 %	20 %	0.31	0.19	3.1%	1.9%

e.g. Dimensional change of 118mm wide ThermoWood® cladding when 50%RH→90%RH  
 ThermoWood® MC change 5% (5%→10%) Width change (%) 5% x 0.17 = 0.85% Width change in mm 0.0085 x 118mm = 1mm

## Durability

Finnforest ThermoWood® has improved durability due to the degradation of hemicelluloses (arabinose, galactose, xylose, mannose). These are the foodstuff for rot-causing fungi and bacteria and in the absence of nourishment they are not able to occupy ThermoWood®.

ThermoWood® has high resistance to most decay fungi. ThermoWood® is resistant to Longhorn beetles, Anobium punctatum and Lyctus Bruneus.

**NB:** ThermoWood® is not resistant to the biological growth of algae on its surface. These organisms get their nourishment from the surrounding air and do not cause structural damage. However they are considered in many cases to be an aesthetic problem. Their growth can be prevented by using surface treatments.

## Service life

Scandinavian Pine treated with the Thermo-D process can be considered suitable for usage in situations where hazard classes 1-3 (EN-335-2) apply.

General service situations and hazard classes given in EN 335-1 (Appendix 1):

- Hazard class 1. Above ground, covered (dry);
  - Hazard class 2. Above ground, covered (risk of wetting);
  - Hazard class 3. Above ground, not covered
- In normal conditions external cladding is exposed to hazard class 2 or 3

BRE has reviewed data supplied by VTT relating to thermally treated timber. On the basis of this evidence, BRE was able to conclude that data for a test material corresponding to ThermoWood® D Pine gave a durability performance equivalent to that acceptable in the UK for cladding, providing a 30 year service life, when following manufacturer's guidance.

### **Density**

ThermoWood® density is 350 - 480kg/m<sup>3</sup> when its moisture content is 6% (typical for RH = 65%, t = 20°C conditions). Natural variation will occur between individual boards. Material density is approximately 10% lower than the density of Nordic Pine.

### **Nail & screw holding strength**

Nail holding strength values for wire and improved nails for ThermoWood® do not differ from the values of European Redwood. However, screw holding strength is about 20% less due to the altered state of the cell wall during the ThermoWood® process.

### **Emissions**

ThermoWood® has a characteristic smell which is caused by the chemical changes that occur during heat treatment.

The smell might not be appreciated by all, but several tests have shown that emissions are not harmful or dangerous.

TVOC (Total Volatile Organic Compounds) values are significantly lower than those for untreated softwoods due to the evaporation of most of the terpenes during heat treatment process.

### **Fire performance**

According to EN 13501 (SBI-test) ThermoWood® is in reaction to fire class D. It is possible to treat further with fire protective treatments in order to achieve UK fire rating class 1 Spread of Flame.

### **Thermal properties**

Thermal conductivity of ThermoWood® is reduced by 20-25% compared with normal softwoods. According to VTT tests the thermal conductivity of ThermoWood® (D, Pine) is 0.099 W/(m K). The corresponding value for untreated sawn timber is 0.12 W/(m K).

### **Colour**

The colour of ThermoWood® is affected by the treatment temperature and time. The higher the temperature the darker the appearance. As with all softwoods variances occur and are due to varying densities. When ThermoWood® is exposed to UV light, it will lose its colour and turn silver grey unless protected by a pigmented surface protection.

### **Moisture content**

ThermoWood® has moisture content of 5-7% (50%RH) when packed at production site.

This level will change according to atmospheric conditions. The Equilibrium moisture content is only half of the corresponding value for untreated Pine (Table 1).

### **Environment**

Finnforest ThermoWood® is PEFC-certificated which ensures the raw material is sourced from sustainable managed forests.

# Products

Visual quality

Finnforest ThermoWood® is produced from European Redwood (*Pinus Sylvestris*). The raw material is specially selected and sawn from live knotted logs.



## Types of cladding

A shiplap profile is most appropriate for horizontal cladding as the slope shoulder will effectively channel water away from the up stand. Tapered profile is also designed for horizontal cladding. The lower edge is chamfered to direct water away from cladding. Also, PMV can be used for horizontal cladding. Horizontal tongued and grooved boards should always be installed tongue uppermost. A 2mm clearance gap should always be incorporated between the boards to allow possible expansion. For vertical applications most appropriate profiles are Channel Cladding and PMV.



# Product profiles

Finnforest ThermoWood® is available in a variety of finished profiles or as treated sawn material in sizes up to a maximum of 50 x 150mm.



T&G shiplap (planed or textured surface)

Code	Nominal (mm)	Finished (mm)	Cover
Xxx	25 x 125	21 x 118	110mm



PMV cladding (planed or textured surface)

Code	Nominal (mm)	Finished (mm)	Cover
Xxx	25 x 125	21 x 118	110mm



Battening/Cornering

21 x 92mm	Two sides textured, 2 sides smooth
-----------	------------------------------------



T&G shiplap (planed or textured surface)

Code	Nominal (mm)	Finished (mm)	Cover
Xxx	25 x 125	21 x 118	110mm



PMV cladding (planed or textured surface)

Code	Nominal (mm)	Finished (mm)	Cover
Xxx	25 x 125	21 x 118	110mm



Battening/Cornering

42 x 42mm	Two sides textured, 2 sides smooth
-----------	------------------------------------

Product	Actual Width	Cover width (Incl. expansion gap 2mm)	Running meters / m <sup>2</sup>	Horizontal or Vertical Application
Shiplap Cladding	118mm	110mm	9.1	H
Tapered Cladding	142mm	132mm	7.6	H
PMV Cladding	118mm	110mm	9.1	H/V
Channel Cladding	118mm	110mm	9.1	V

→ [www.finnforest.co.uk](http://www.finnforest.co.uk)  
For a list of nearest stockists

# General design

The general guidance and schematic details presented in Sections 4 and 5 (General Design and Installation) of this manual have been prepared in accordance with best practice guidelines recommended by TRADA Technology and are specific to Finnforest ThermoWood®.

The purpose of ThermoWood® cladding is to provide a waterproof design which gives long service life and low maintenance costs. These instructions are offered as general recommendations. They do not provide structural design. The compatibility of these guidelines to the specific structure should be verified on a case-by-case basis. In short, the basic principles for the installation of ThermoWood® cladding may be summarised below.

1. Take into account the surrounding buildings, local vegetation and ground as well as the territorial claims when designing the cladding.
2. Always incorporate a drained and ventilated cavity between the ThermoWood® cladding and external walls whether they are of timber frame or masonry construction. This will allow airflow and moisture management behind the ThermoWood® cladding and will reduce the potential for mould growth on the inside faces of external walls.
3. The drained and ventilated cavity should extend from the lower edge to the upper edge of the wall and be open from both edges to allow vertical circulation of air (See figures 9 and 10).
4. Make sure that water flows away from the cladding boards and structure and that sufficient ventilation is provided to allow the cladding boards to dry.
5. Chamfer all horizontal surfaces.
6. Make sure that appropriate flashings are applied at intersections between cladding boards, windows and doors, horizontal trim and at roof/cladding intersections. Flashings should be installed so that they direct water away from the cladding boards.
7. Install gutters so that water flows away from the cladding boards and structure.
8. Ensure that the cladding and structure is protected from indirect wetting, as a result of splashing off the ground, by stopping any wood cladding 200mm above ground level or abutting roofs to prevent this form of wetting.
9. Do not plant bushes or other plants in direct contact with the cladding.
10. Always seal the end grains of cladding boards when installed, especially if cladding boards are to be finished with a low build stain or opaque paint system. End sealing reduces the potential of any moisture ingress.

It is important to avoid direct contact between ThermoWood® and porous or wetted non porous surfaces. This is particularly important where the end grain is exposed because it is very absorbent. End grain protection can be provided by either a damp proof membrane or flashing. Vertical boards should always be kept clear of any flashings below by at least 10mm and their performance can be enhanced by chamfering the bottom edges which improves the ability of the board to discharge rainwater to the ground. Also have the top edges well protected. Horizontal boards should stop short of any vertical members by 8mm to allow ventilation to the end grain of the surfaces. Butt joints between cladding boards are installed without a gap.

## Battens

For the purpose of allowing efficient ventilation behind the ThermoWood® cladding, the cavity behind the cladding should not be less than 19mm wide. The width of the ventilation gap is determined by the size of battens necessary to fix the boards.

The following rules of thumb regarding the batten sizes should be followed:

- When using improved nails (e.g. annular ring shank) a batten twice the thickness of the board is adequate. Vertical ThermoWood® battens of thickness 21mm x 92mm are suitable if fixed to timber frame walls and are coincident with wall studs.
- When using standard nails the battens should be at least 2.5 times the thickness of the boards to be fixed. Vertical ThermoWood® battens of thickness 21mm are suitable if fixed to timber frame walls and are coincident with wall studs.
- If 42 x 42mm battens are used, it will be necessary to double batten the position where cladding boards meet i.e. produce an 84mm surface to fix to.

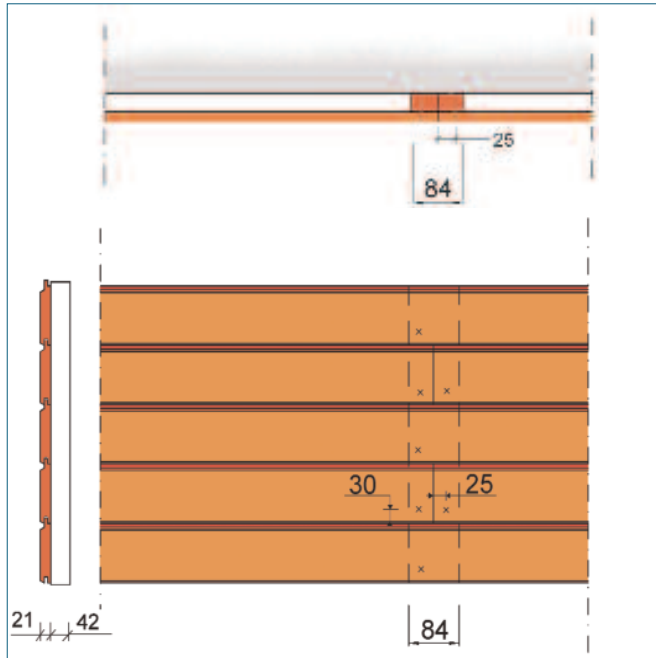


Figure 3.

Where joints occur the batten width should be a minimum of 84mm. Nail fixing should be at least 25mm from the ends and edges of the boards. Boards under 120mm can be fixed with one nail. The nail should be placed to the lower part of the board.

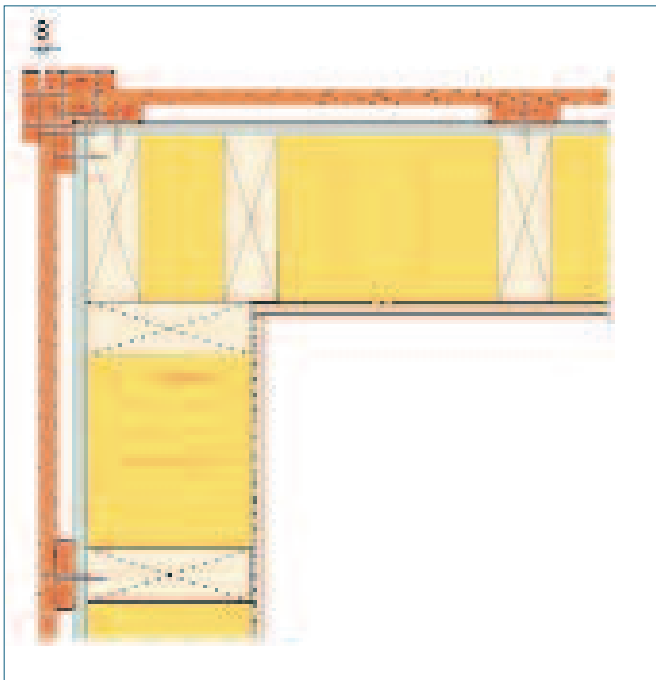


Figure 4. The battens must be coincident with studs when fixing to timber frame wall.

When timber cladding is exposed on elevations of taller buildings or when battens are not fixed coincident with timber studs or when timber cladding is fixed to masonry building, increased thickness of battens is recommended. This ensures that cladding is fixed robustly to the building.

- When using standard nails the batten of thickness 50mm is suitable.
- When using improved nails (e.g. annular ring shank) the batten should be a minimum thickness of 42mm.

#### Timber frame walls

When designing horizontal ThermoWood® cladding, the battens must be coincident with the timber studs and these are usually at 600mm centres.

# Masonry walls

To avoid driving nails into masonry walls, battens should be thick enough to provide the necessary penetration of the fixing.

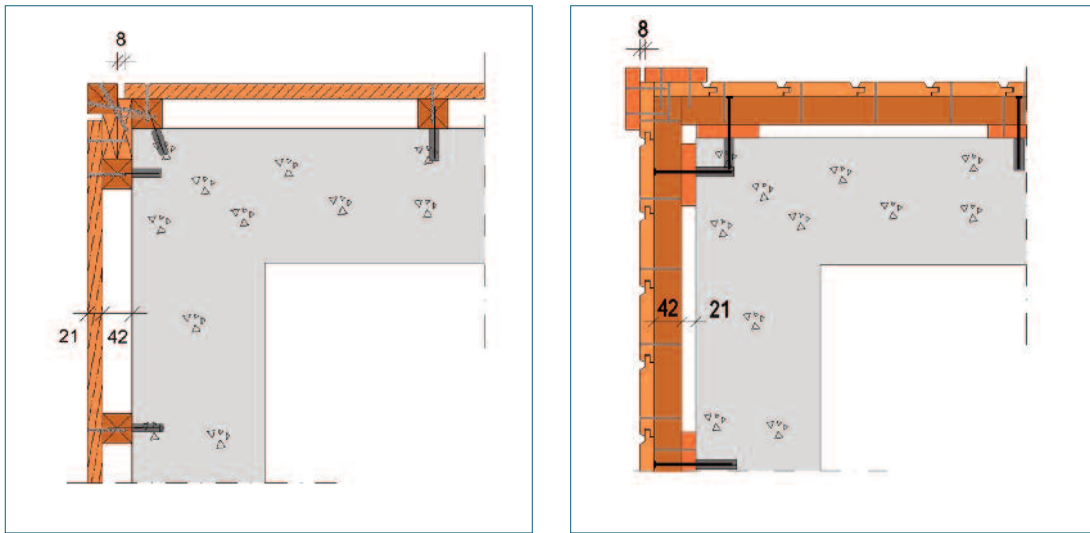


Figure 5. Battens should be thick enough to avoid driving the board fixing nails into masonry.

## 4.2 maintaining a drained and ventilated cavity

If vertical boards are fixed to horizontal battens it will be necessary to introduce vertical counter battens behind the horizontal battens to provide drainage and air circulation. If the horizontal battens are to be fixed to counter battens, the counter battens must be of sufficient thickness and follow the guidance detailed above. If board-on-board cladding is used it is not necessary to provide counter-battens. In this case it is preferable if the horizontal battens are chamfered on the top edge to shed any water outwards.

**Note:** the battens must be 2 or 2.5 times the board thickness (depending whether improved or smooth shank nails are used) unless the battens are coincident with timber studs.

To avoid infestation by insects any openings at the top or bottom of close jointed boards should be protected by an insect mesh.

## 4.3 openings

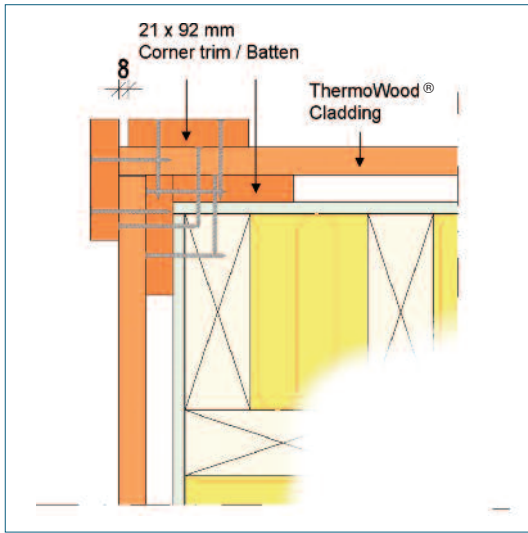
Most areas of timber cladding will either contain openings for windows or doors, or be contained within a dimensional framework determined by areas of glazing or a regular pattern of windows. Ideally any openings should be in multiples of the chosen board width to avoid the need to notch or split boards. Having to notch or split boards around openings can lead to poor appearance. It is also important to consider the flashing, sills and damp proof courses around any openings to ensure that any water is drained away to the outside of the wall.

## 4.4 corner details

The same corner details can be followed when installing cladding to a masonry wall. Always use thicker battens 42/50mm when fixing cladding to a masonry wall (See figure 5).

# External corners for horizontal cladding - timber frame wall

Option 1



Option 2

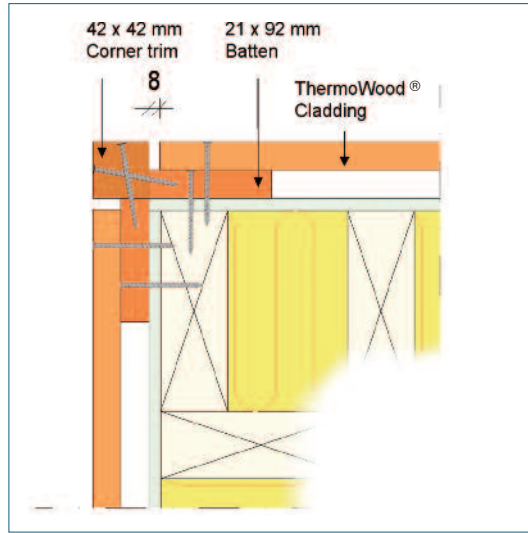
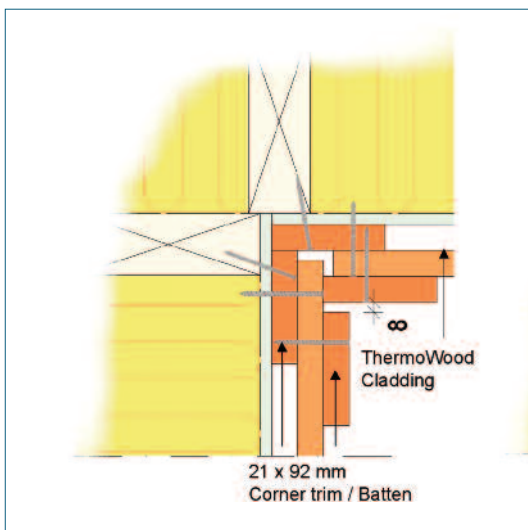


Figure 6. Outer corners for horizontal cladding. Battens at max. 600mm centres. Leave 8mm expansion gap between end of cladding board and corner trim.

## Internal corners for horizontal cladding - timber frame wall

Option 1



Option 2

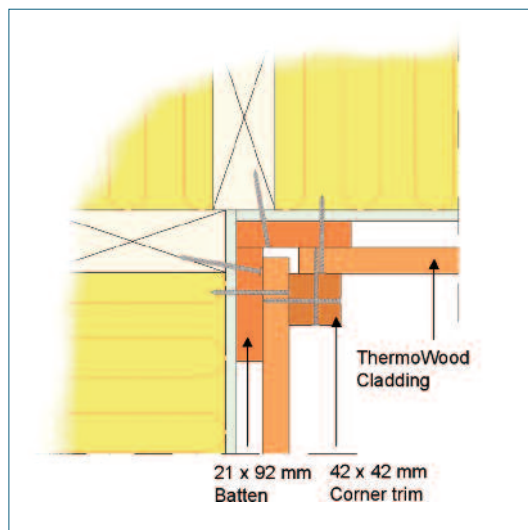


Figure 7. Internal corners for horizontal cladding.

# External and internal corners for vertical cladding - timber frame wall

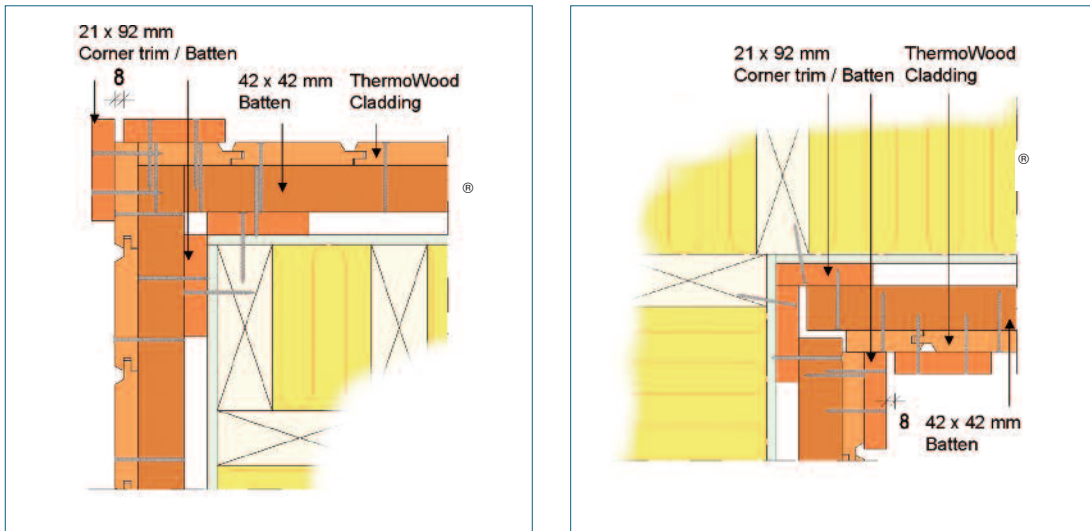


Figure 8. External and internal corner detail for vertical cladding, showing batten and trim detail using 21 x 92mm and 42 x 42mm ThermoWood®.

## 4.5 Upper edge and lower edge details

Recommendation for upper edge and lower edge details are presented in figures 9 and 10. Take into account the surroundings, local vegetation, ground and climate as well as the territorial requirements and conditions when designing the details.

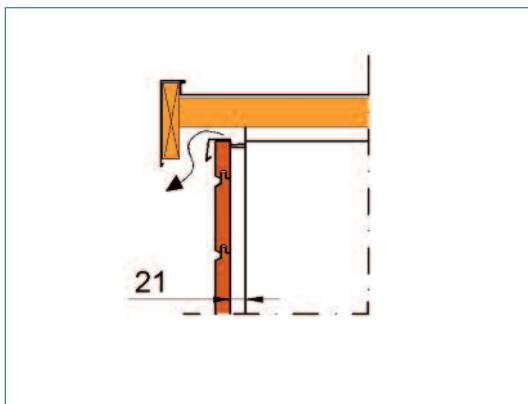


Figure 9. Upper edge detail showing ventilation gap above top board.

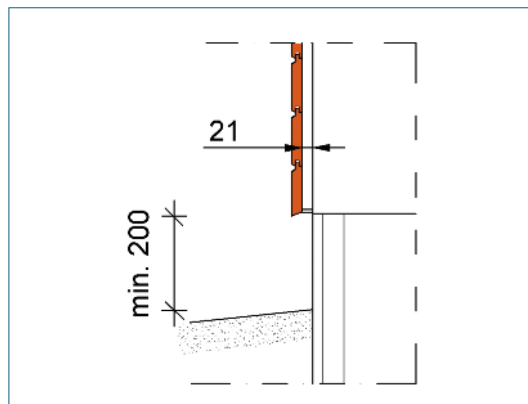


Figure 10. Lower edge detail showing 200mm gap between lower edge and the ground. Note the chamfered bottom edge allowing water run off. The drained and ventilated cavity should be open from both lower and upper edges to allow vertical circulation of air.

## 5.1 fixings

It is recommended to use a nail gun with a facility to adjust the pressure. The nail should penetrate so that the head sits flush with the cladding surface (See figure 11). Typically 2.1 or 2.5 is the recommended nail thickness when using an airgun and improved nails. The use of improved nails (annular ring shank nails) is recommended to improve nail holding strength and to be able to use thinner nails to avoid splitting. For standard nails, nail penetration into battens should be 2.5x the thickness of the board being fixed. For improved nails (e.g. ring shank nails) nail penetration into the batten should be 2x thickness of the board.

### When nailing pay attention to the following:

1. Using a hammer increases the risk of splitting due to hammer contact with the wood.
2. Do not nail on knots.
3. If tongue and grooved boards are to be used, a 2mm clearance gap should be present between the tongue and groove of the joint. The gap is required to allow for settlement of the building and any potential movement due to moisture uptake. A similar gap should be left between tapered cladding boards.
4. If screws are to be used, pilot drilling is always recommended.
5. Secret nailing with single nails should be avoided for tongue and grooved ThermoWood® boards because of the risk of the tongue splitting, although the risk of splitting can be reduced by drilling pilot holes.
6. Nail fixing should be at least 25mm from the ends and 30mm from the edges of the boards. Always apply the edge and end distance rules to avoid splitting. If forced to fix under the recommended edge and end distances always drill nail holes before fixing to prevent splitting of the boards.
7. Nails should preferably be located as close as possible to the quarter points in the board width although the actual position of the fixings may be determined by the board profile. It is important that where boards are overlapped or in a board-on-board pattern the nails fixing the outer boards do not penetrate the inner boards. Overlap between outer and inner boards on board-on-board cladding should be 20mm.
8. Cladding boards 120mm wide or above should be double nailed. Boards under 120mm can be fixed with one nail. The nail should be placed to the lower part of the board.
9. In conditions where cladding boards are exposed to heavy wind, loading boards 100mm wide and above should be double nailed.
10. Where boards are butt-jointed the junction should always occur over battens. If 42mm wide battens are used, it will be necessary to double batten the position where cladding boards meet to assure that nail fixing is at least 25mm from the end of the board (See figure 3).

### Nail types

Stainless steel nails should be used to fix Finnforest ThermoWood®. Mild steel and even plated nails can deteriorate when exposed to moisture and stain the area around the nail head. A less visible lower gauge nail can be used but lower pull-through strength should be noted and additional fixings will be required. 'Lost-head', 'small head' or 'siding nails' are suitable for ThermoWood® but 'round-head' nails offer greater holding power.

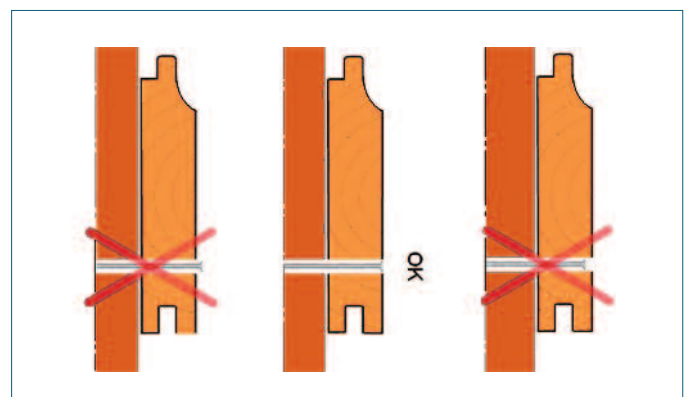


Figure 11. Schematic drawing on the correct nail penetration depth. The nail should penetrate so that the head sits flush with the cladding surface.

# Installation, surface treatment and maintenance

## 5.2 Nailing positions

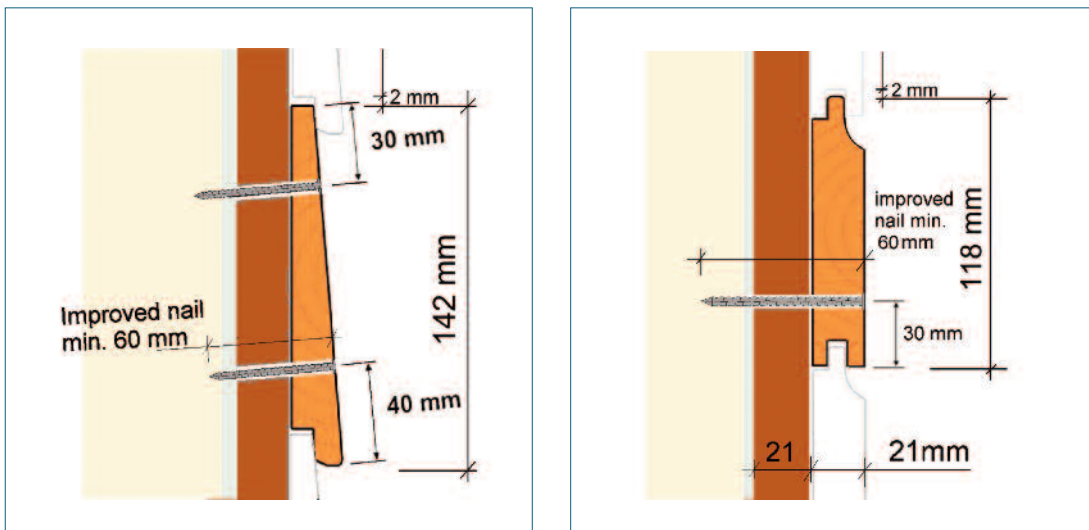


Figure 12. When using 142mm wide bevel profiles, correct nailing spots are 40mm from lower board edge and 30mm from upper board edge. One nail 30mm from the bottom edge is sufficient for the 118mm profiles.

## 6. Surface treatment

ThermoWood® is a durable product that will last for many years without applying surface treatments. The natural effect of weathering and exposure to sunlight can however cause fading, surface cracking and the potential for algae growth.

Pigmented translucent stain gives protection against UV light (i.e. greying of the surface) and retains the natural ThermoWood® appearance. The most commonly used are translucent stains with brown pigment close to the original ThermoWood® colour. The finish is usually slightly darker than the natural colour of ThermoWood®.

Choose wood finish recommended for softwoods and for exterior use. Use either translucent wood stains or opaque wood stains. Exterior wood stains perform generally better on textured sawn surfaces than on smoothly planed ones.

Different treatments will have different maintenance intervals. The more pigment used, the longer the maintenance-free period. See paint manufacturer's instructions.

It is recommended to apply one coat of finish before installation and apply additional coats once the boards are in situ. Sealing of end grain is very important. It will reduce the potential for any moisture ingress and possible end staining around the end grain.

The finish should be applied on ThermoWood® in accordance with the recommendations of the paint manufacturer, with strict attention given to proper coverage instructions, temperature and weather conditions at the time of painting and other specific requirements. Surface must be clean and dry when treated.

## Examples of paint manufacturers' recommendations

	Translucent	Opaque
Sadolin	2 coats Sadolin Supercoat	2 coats Sadolin Superdec
Sikkens	Sikkens Cetol; 1 coat BL21, 2 coats BL31	2 coats Sikkens Cetol BL
Ronseal	1 coat Excel 30, 2 coats Excel 60	1 coat Excel 20, 2 coats Excel 40

### 6.1 Maintenance

The environment and climate have a crucial impact on the service life of surface treatment. UV light and moisture are the major factors affecting surface treatment. This could mean south facing elevations needing more regular maintenance than those facing north. In addition, buildings exposed to sea air may require more maintenance than those inland due to the abrasive factor of the wind blowing in from the sea.

To ensure maximum performance of coatings, the surfaces should be cleaned and checked annually. If defects occur it is usually a sign of a structural weakness which should be repaired immediately. Mechanical damage requires instant repair.

Annual inspection is advisable in order to avoid possible serious damage. Always refer to the paint manufacturer's specific instructions of maintenance, if available.

#### maintenance check list for ThermoWood® cladding

##### A. Fixings of cladding boards and trims

Fix loose cladding boards and trims. Replace any damaged boards.

##### B. Dirt on the surface

Wash down according to paint manufacturer's instructions to remove contamination from weathering and any loose particles.

##### C. Coating and need for repaint

Loose paint material should be removed by sanding or scraping. Brush down to remove dust from the surface. Treat surface with one or more coats. Use the same translucent wood stain or opaque wood stain as used before.

Always follow paint manufacturer's instructions.

##### D. Rain damage

Clean any accumulation of leaves and trash from the gutters so that the water flows freely through them. Repair any leaks where water can get behind the cladding boards and cause deterioration. Make sure that water does not stand on horizontal surfaces (chamfering of horizontal surfaces and bottom edges).

##### E. Flashings

Any flashing that does not direct water away from the cladding boards, or allows water to penetrate into the wall, must be corrected. Improperly installed flashing may cause leakage.

# General working with ThermoWood® products

## 7. General working with ThermoWood® products

ThermoWood® cuts like untreated Pine. However due to the dry nature of ThermoWood®, the saw dust is lighter and finer.

Because of the more brittle nature of ThermoWood®, care should be taken not to apply unnecessary impact stresses as these can result in splitting and damage.

## 8. Health & safety

There is no major difference in health and safety aspects of ThermoWood® compared to normal softwood species. There are still two detectable differences: the smell of the material and the dust produced when processing ThermoWood®.

ThermoWood® has a smoke-like smell, which arises from chemical compounds called furfurals. The volatile organic compound (VOC) emissions from ThermoWood® are only a fraction of those from normal Pine.

There are no toxic or harmful components in ThermoWood® but if wood splinters penetrate the skin they should be removed as soon as possible.

ThermoWood® dust has a smaller particle size than normal softwoods. It is comparable to MDF (although lower density) or hardwood dust. Dust can cause problems for people suffering from asthma. Because of the reasons mentioned above one has to pay special attention to the dust removal system. If dust extraction systems are not available, dust masks should be used.

## 9. Handling & storage

When in storage ThermoWood® should be laid flat with sufficient support to eliminate bowing (recommended distance of 600mm between supports). To minimise the potential for degradation, store ThermoWood® out of ground contact and in dry conditions.

Where gluing and/or surface treatment is taking place, material should be acclimatised to the moisture content and temperature as required by the manufacturer's recommendations.

### 9.1 waste handling

ThermoWood® is a natural wood product and has no chemical additives. When not glued or painted, ThermoWood® waste can be handled as any other untreated wood waste.

# Appendix 1

## **Hazard classifications**

European Standard for the assessment of Hazard classes:  
Application to solid wood (source EN 335-1, EN 335-2).

### **Hazard class 1**

Where wood is under cover, fully protected from weather and not exposed to wetting.

In this environment the moisture content of solid wood is such that the risk of attack by surface moulds or by staining or wood destroying fungi is insignificant, i.e. the wood shall have a moisture content of maximum 20% in any part for practically the whole of its service life. However, attack by wood boring insects, including termites, is possible although the frequency and importance of the insect risk depends on the geographic region.

### **Hazard class 2**

Where wood is under cover and fully protected from the weather but where high environmental humidity can lead to occasional but not persistent wetting.

In this environment the moisture content of solid wood occasionally exceeds 20% either in the whole or only in part of the component and thus allows attack by wood destroying fungi. For timber whose use includes a decorative function, discolouration can also occur as a result of the growth of surface moulds and staining fungi.

### **Hazard class 3**

Where wood is not covered and is not in contact with the ground. It is either continually exposed to the weather or is protected from the weather but subject to frequent wetting.

In this environment solid wood can be expected to have a moisture content above 20% frequently, and thus it will often be liable to attack by wood destroying fungi. For timber whose use includes a decorative function, discolouration can occur as a result of the growth of surface moulds and staining fungi.

### **Hazard class 4**

Where wood or wood-based product is in contact with the ground or fresh water and is permanently exposed to wetting.

In this environment solid wood can have a moisture content above 20% permanently and is liable to attack by wood destroying fungi. Termites can be a problem in certain geographic regions. Additionally, the above ground (or above water) portion of certain components, for example fence posts, may be attacked by wood-boring beetles.

### **Hazard class 5**

Where wood is permanently exposed to salt water.

**In normal conditions external cladding is exposed to hazard class 2 or 3.**

Local Stockist



PEFC/16-37-006  
Promoting sustainable forest management  
for more info: [www.pefc.org](http://www.pefc.org)

→ [www.finnforest.co.uk](http://www.finnforest.co.uk)  
For details of other products in the range

For more information and a list of stockists in your area visit [www.finnforest.co.uk](http://www.finnforest.co.uk) or call 0800 00 44 44.

Wood is the only building material that is truly renewable, if well managed. Forest certification schemes give assurance that the timber is legal and from sustainable sources. Finnforest UK sources certified timber over uncertified and is an approved Chain of Custody supplier.

FF4048 Sep 10

The photographs in this brochure are for illustration purposes only. Finnforest reserves the right to change the product specification and cabin range without notice.

Every effort has been made to ensure that colours are accurate within the limitations of natural lighting conditions and the four colour printing process.

Dimensions and accuracy of information are correct at time of going to press.

This brochure has been printed on an environmentally certified paper originally sourced from well managed and sustainable forests. Further details available on request.



**finnforest**